

T-camera

Terahertz and far infrared 2D imaging

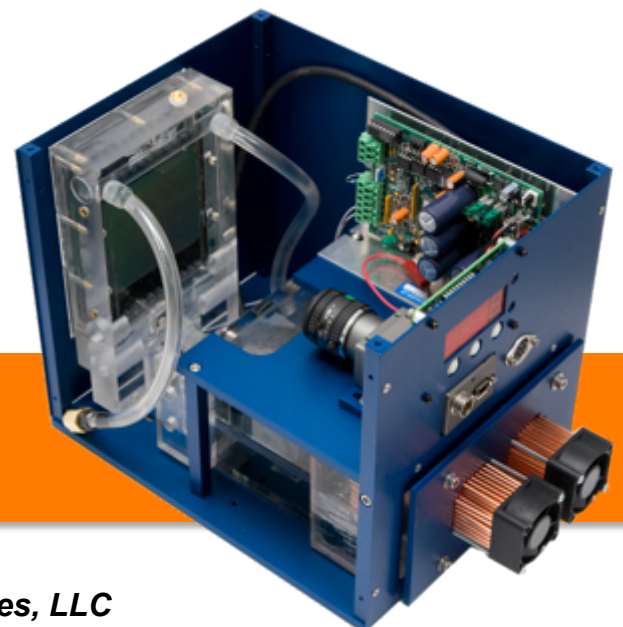
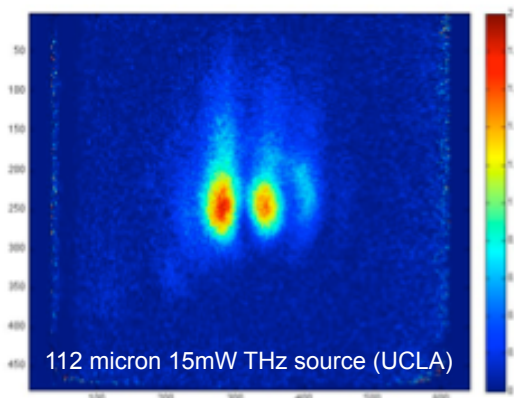
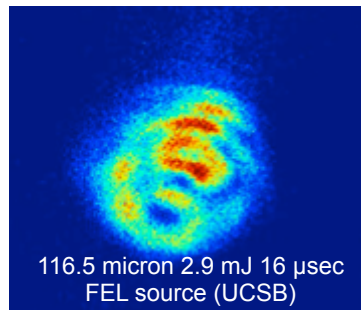
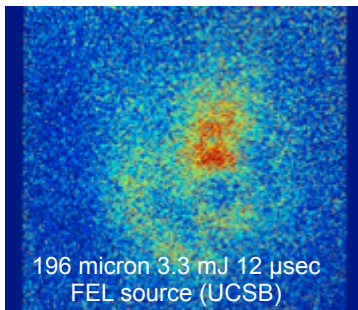


Features:

- Spatially resolved, broadband radiation beam detector
- Performance similar to or better than much more expensive IR cameras and pyroelectric arrays
- Very large active area; even larger custom sizes available
- Large dynamic range; 6 bit standard, optional up to 8 bit

Standard Specifications:

Wavelength	500 nm – 500 μ m
THz sensitivity	30 μ W/mm ² ; 1 μ J/mm ²
Active area	50x40 mm; 20 cm ²
Resolution	250 μ m; 200x160; 32 kpix
Dynamic Range	6 bits
Physical footprint	20x25 cm



Other options are available upon request.
For purchasing information, please email us
at info@radiabeam.com.

RadiaBeam Technologies, LLC
www.radiabeam.com

1717 Stewart St. Santa Monica, CA 90404 Phone: 310-822-5845 Fax: 310-582-1212