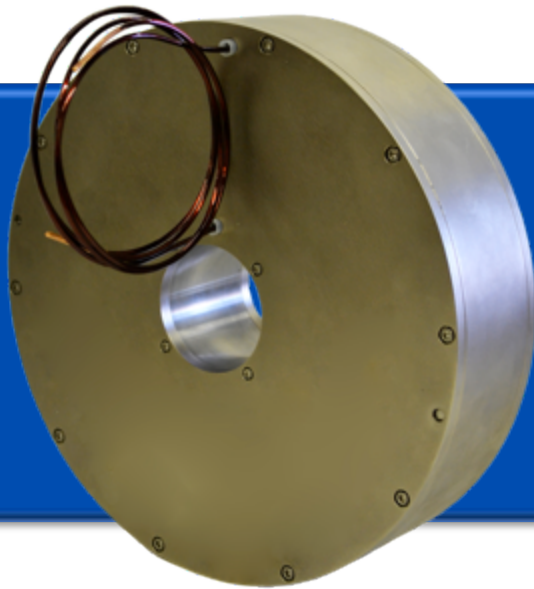


# Focusing Solenoid

EMS-217-250



## Features:

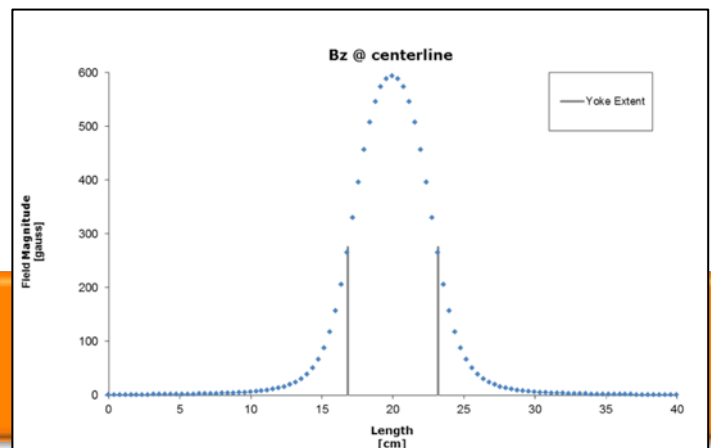
- Compact – small transverse and longitudinal footprint
- Air-cooled
- Comes standard with taped coils
- Nickel-plated
- Comes with terminal block and mounting hardware

## Specifications:

Field Strength	595 G
Magnetic Length	6.57 cm
Current	4.8 A
Voltage	6.3 V
Resistance	1.33 $\Omega$
Inductance	175 mH
Power	30.2 W

## Dimensions:

Weight	23 kg
Outer Diameter	23.5 cm
Length	6.35 cm
Bore	5.51 cm
# of coil turns	660



Other options are available upon request.  
For purchasing information, please email us  
at [info@radiabeam.com](mailto:info@radiabeam.com).