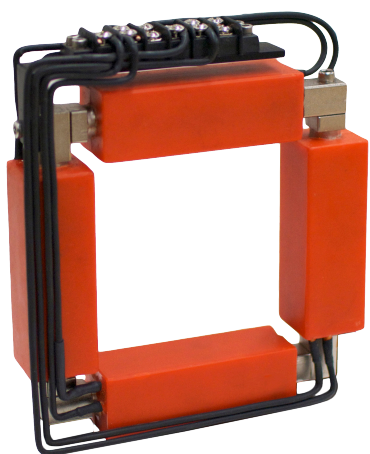


Small Steering Magnet

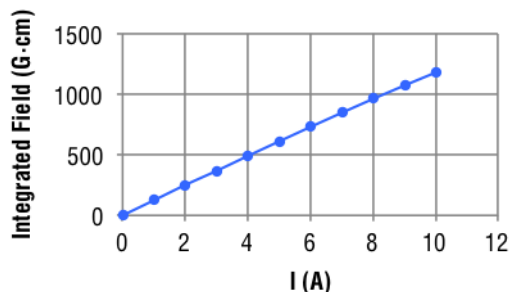
STM-01-340-110



Integrated field 401 G·cm
Peak field 31.6 G
Magnetic length 12.7 cm
Max current per axis 3.4 A
Voltage per axis 0.5 V
Calibration 118 G·cm/A

Bore 8.6 cm
Physical length 2.8 cm
Transverse size 16.3 x 14.2 cm

STM-01-340-110 Magnetization

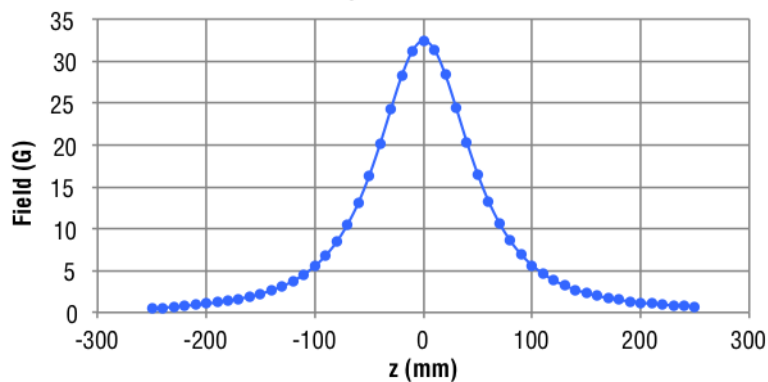


The basic picture frame magnet has become the standard for the angular correction of beams under 100 MeV. The coils are directly wrapped on nickel-plated steel yokes and then epoxy impregnated for a simple, yet attractive appearance. The design lends itself to traditional base mounting while optional clamps allow this small steerer to be mounted directly to the beamline tube.

FEATURES

- Air-cooled
- Epoxy impregnated
- Nickel-plated steel
- Beamtube-mounted option available
- Fits around 3-3/8" CF (DN50) flange

STM-01-340-110 Longitudinal Profile



www.radiabeam.com

info@radiabeam.com

v: +1 310 822 5845 | f: +1 310 582 1212

Other options are available upon request. Please contact us or visit our website for purchasing information.