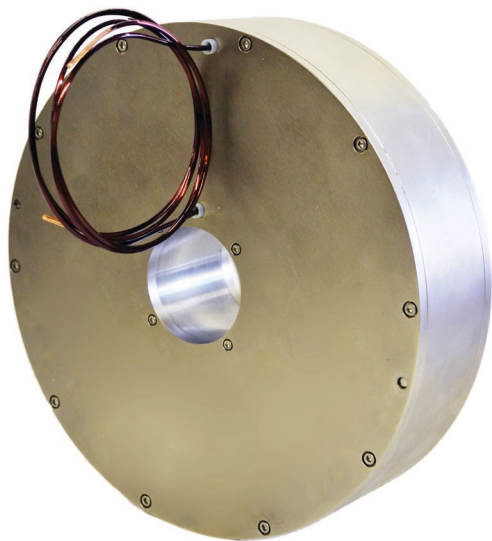


# Solenoid

EMS-01-217-250



Integrated focus .....	$1.8 \times 10^6 \text{ G}^2\text{-cm}$
Field strength .....	615 G
Magnetic length .....	6.5 cm
Current .....	4.6 A
Voltage .....	7.2 V
Power .....	33 W
Inductance .....	175 mH
Calibration .....	870 G·cm/A
Focus calibration .....	$827 \text{ G}^2\text{-m/A}^2$
Number of turns .....	660
Bore .....	5.51 cm
Length .....	6.35 cm
Outer diameter .....	23.5 cm
Weight .....	23 kg

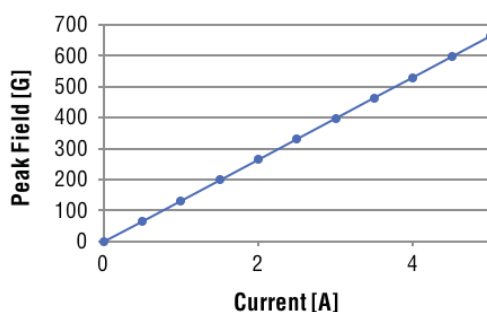
RadiaBeam's EMS-01-217-250 solenoid is ideal for low-energy, chromaticity-free focusing. The 2.17" (5.51 cm) bore is compatible with most smaller beam pipes and the iron field clamps constrain the field within the solenoid's footprint.

Our modular design approach allows straightforward scaling of the design to other energies, lengths, and bores. Contact us for pricing and other options.

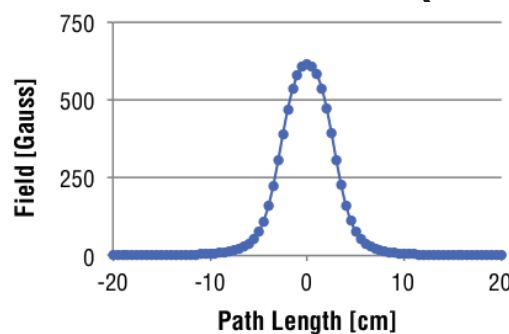
## FEATURES

- Compact transverse and longitudinal footprint
- Nickel-plated yoke
- Terminal block and mounting hardware included

## MAGNETIZATION



## LONGITUDINAL PROFILE (I = 4.6 A)



[www.radiabeam.com](http://www.radiabeam.com)

[info@radiabeam.com](mailto:info@radiabeam.com)

v: +1 310 822 5845 | f: +1 310 582 1212

Other options are available upon request. Please contact us or visit our website for purchasing information.